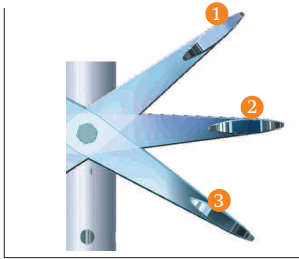


Central locking brakes

Hospital beds must be reliable and easy to manoeuvre. Modern hospital beds are therefore equipped with central locking brake mechanisms, which enable time and energy-saving operation.

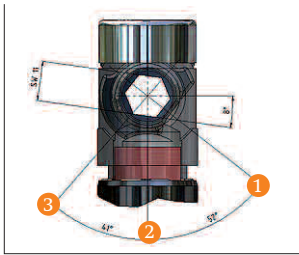


Directional locking brakes

For setting of straight ahead motion, the use of a directional locking brake integrated in the fixing pin is recommended.

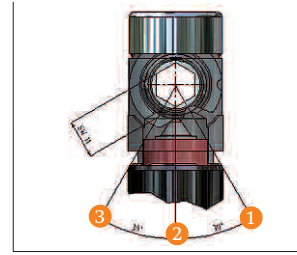
The mechanism allows a central pedal to select the following modes of operation:

- 1: Motion straight ahead (only when equipped with directional locking brake mode)
- 2: Changes of direction: free mobility of all castors
- 3: Full locking of all four castors

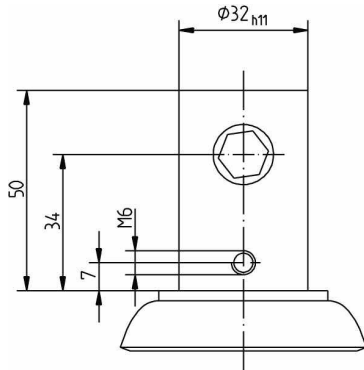


Fixing pins

Standard-cam (41° and 52°)

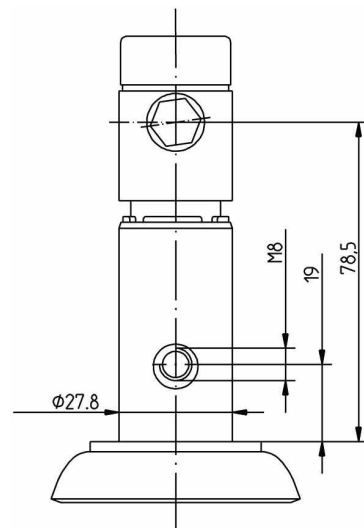


30°-cam



Fixing Pin 34 mm

- _ For standard insertion measurement \varnothing 32
- _ Switching shaft variants A/B
- _ Switching shaft in line or across direction of travel
- _ Four tapped fixing holes



Fixing Pin 78,5 mm

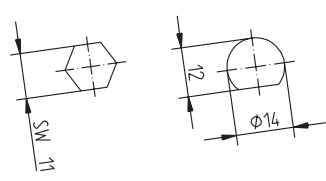
- _ For standard insertion measurement \varnothing 28
- _ Switching shaft variants A/B
- _ Switching shaft in line or across direction of travel
- _ Four tapped fixing holes
- _ Snap-on adapter sleeves for different tube measurements available!

The 4-digit order number

How to use the 4-digit order number, e.g.

390q 29K 150v Z 2351

For the products in this chapter further information needs to be added to our reference number (coloured underlays).

1. Digit:	Distance from the tube seat to middle of the switching bar*	Kind of cam	Switching shaft	A	B		
2	x = 78,5 mm	Standard-cam	A				
4	x = 78,5 mm	30°-cam	A				
6	x = 78,5 mm	14-12-cam	B				
8	x = 34 mm	Standard-cam	A				
9	x = 34 mm	30°-cam	A				
*on request: in 71 mm possible							

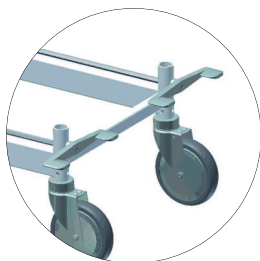
2. Digit:	Size of the threaded hole*	Distance from the tube seat to the middle of the threaded hole
3	M8	y = 19 mm
8	M6	y = 7 mm
*on request: M6 / 18 mm and M8 / 18 mm possible		

3. Digit:	Position of the bar to the travel direction	Position of the threaded hole to the travel direction
5	across	4-tapped holes
6	along	4-tapped holes

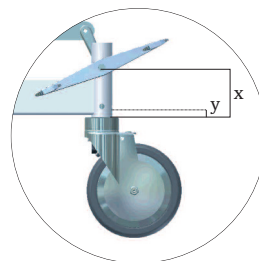
4. Digit:	Adapter measurement		Adapter measurement		
	without	socket (Art. No.)	without	socket (Art. No.)	
0	without		without		
1	Ø 27,8	9 229 111	5	Ø 28,9	9 229 048
2	Ø 28	9 229 050	6	Ø 33,65	9 229 029
3	Ø 28,2	9 229 025	7	Ø 33,65	9 229 023
4	Ø 28,4	9 229 026	8	Ø 36	HB 22 + 9 229 111



Type I
Foot pedal
across direction of travel



Type II
Foot pedal
along direction of travel



only for pins 71 mm and 78,5 mm

When ordering please indicate additionally to order number:

- Integrated directional lock (directional locking brake): yes/no