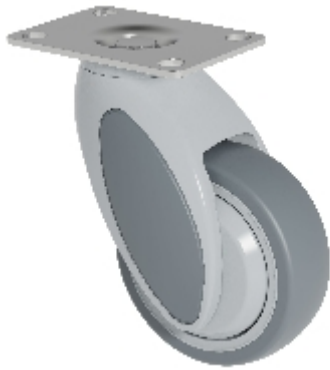




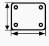
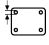
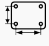




Zwenkwiel:

KSL2-41C-P95(VIVAX 2.0)



Technische data

Diameter		100 mm
Wiel breedte		32 mm
Bouwhoogte		142,5 mm
Uitlading		46 mm
Topplaat afmetingen		95x70 mm
Top plate diameter		8,5 mm
Afstand tussen de boutgaten		75x50/72x52 mm
Draagvermogen		100 kg
Gewicht		600 g

Technische omschrijving

zwenkvork uit hoogwaardig slagvast nylon

zwenkkop met een afgedicht diepgroefkogellager



Wiel

polypropylen wielkern

thermoplastische band (TPE, Shore A 87)
draadbescherming

diepgroefkogellager