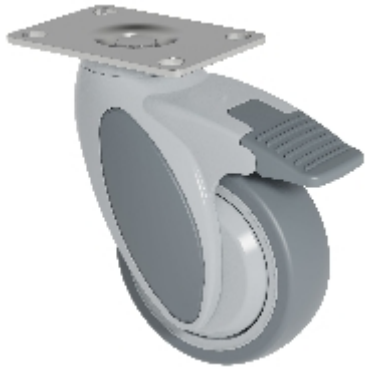





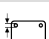





Zwenkwiel met rem/richtingsvastzetter gemonteerd aan achterzijde

## KSF2-41C-P95 (VIVAX 2.0)



### Technische data

Diameter		100 mm
Wiel breedte		32 mm
Bouwhoogte		142,5 mm
Uitlading		46 mm
Topplaat afmetingen		95x70 mm
Top plate diameter		8,5 mm
Afstand tussen de boutgaten		75x50/72x52 mm
Draagvermogen		100 kg
Gewicht		600 g

### Technische omschrijving

zwenkvork uit hoogwaardig slagvast nylon

zwenkkop met een afgedicht diepgroefkogellager



### Wiel

polypropylen wielkern

thermoplastische band (TPE, Shore A 87)  
draadbescherming

diepgroefkogellager