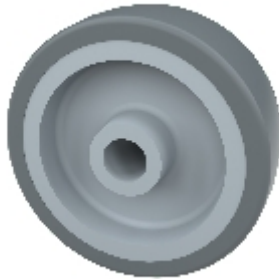



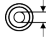



Wielen:

31G-12-29



Technische data

Diameter		75 mm
Loopvlakbreedte		25 mm
Naafbreedte		28,8 mm
Diameter asgat		12 mm
Draagvermogen		60 kg

Wiel

polypropylen wielkern

thermoplastische band (TPE, Shore A 87)

glijlager

niet-oliënd