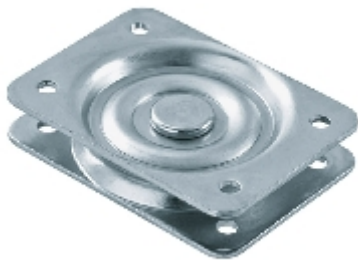



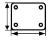
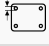
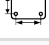


Plate ball bearing:

197B

Op verzoek



## Technische data

Bouwhoogte		19,5 mm
Topplaat afmetingen		95x70 mm
Top plate diameter		6,5 mm
Afstand tussen de boutgaten		75x45 mm
Draagvermogen		280 kg
Gewicht		324 g

## Technische omschrijving

Dubbele plaat met een druklager, één rijjige kogelloopbaan, verzinkt gepassiveerd

